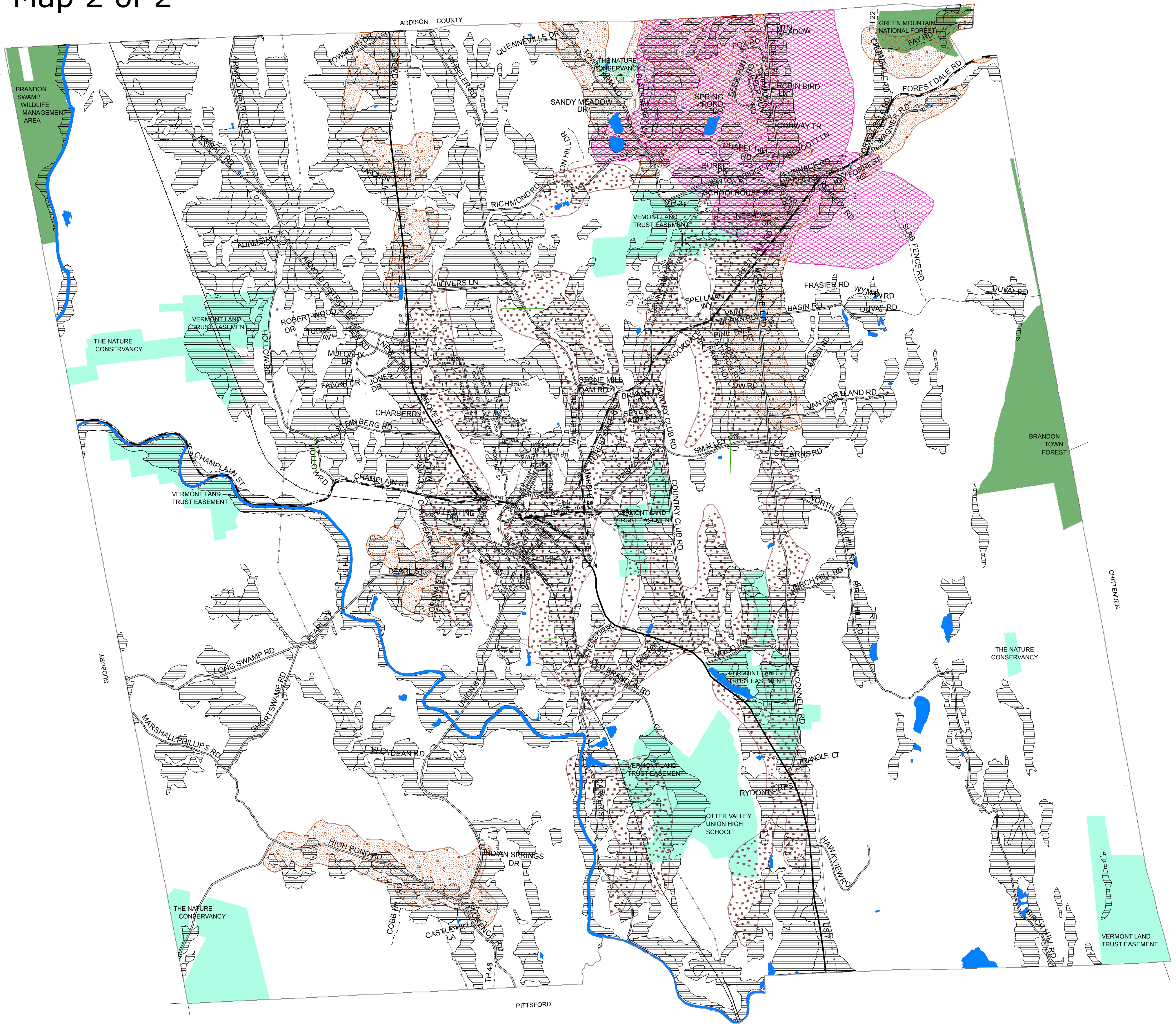


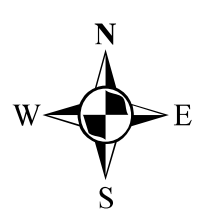
Natural Resources

Brandon

Map 2 of 2



- | | | |
|---------------------|------------------|----------------------------------|
| — US Highway | — Private Road | Agricultural Soils |
| — State Highway | — Other Road | Potential Sand Deposits |
| — Class 2 Town Road | — Railroad | Potential Sand & Gravel Deposits |
| — Class 3 Town Road | — Electric Lines | Conserved Lands |
| — Class 4 Town Road | Rivers & Streams | Private Lands |
| — State Forest Road | Lakes & Ponds | Well-Head Protection Area |



POLITICAL BOUNDARIES: 1:24000 USGS Quadrangles, VCGI, 1991.

ROADS & Rail: VT Center for Geographic Information.

Electric Lines: VT Electric Power Co.

SURFACE WATER: Data is from the Vermont Center for Geographic Information, Inc, Vermont Hydrography Data set. The VHD data Hydrography Data set.

AGRICULTURAL SOILS: Prime, statewide and local are VT primary agricultural soils for Town and Act 250 planning.

SAND AND GRAVEL: The classifications of sand and gravel resources are based on information developed by USDA Natural Resources Service. The classifications are accurate to a resolution of three acres, unmapped "inclusions" up to three acres may exist in some areas. This information is for the evaluation of individual sites. Soils shown are based on national USDA-NRCS criteria and have good potential for sand and gravel.

PUBLIC/CONSERVED LANDS: Vermont Conserved Lands Database 1:5000 parcel data, UVM-SNR-SAL, 1999.

WELLHEAD PROTECTION AREAS: SPA's for groundwater sources (wells, springs), 1:24,000 USGS QUADRANGLES, VANR-DEC- Water Resources Department of Health, 1998.

Location Map

RUTLAND REGIONAL PLANNING COMMISSION

Map intended for planning purposes only. For more information, please contact:
Rutland Regional Planning Commission
PO Box 965, The Opera House, Third Floor
Rutland, VT. 05702