

# FOREST DALE SHARED USE PATH SCOPING STUDY LOCAL CONCERNS MEETING September 4, 2024



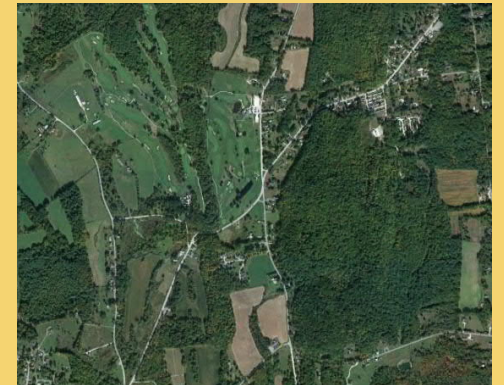
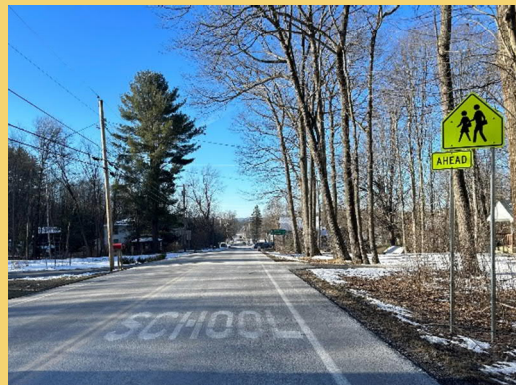


# FOREST DALE SHARED USE PATH SCOPING STUDY

## LOCAL CONCERNS MEETING

September 4, 2024 @ 6:30pm

- Project Overview
- Scoping Study Process
- Project Area: Existing Conditions
- Overview of Next Steps
- Project Alternatives Discussion & Public Input



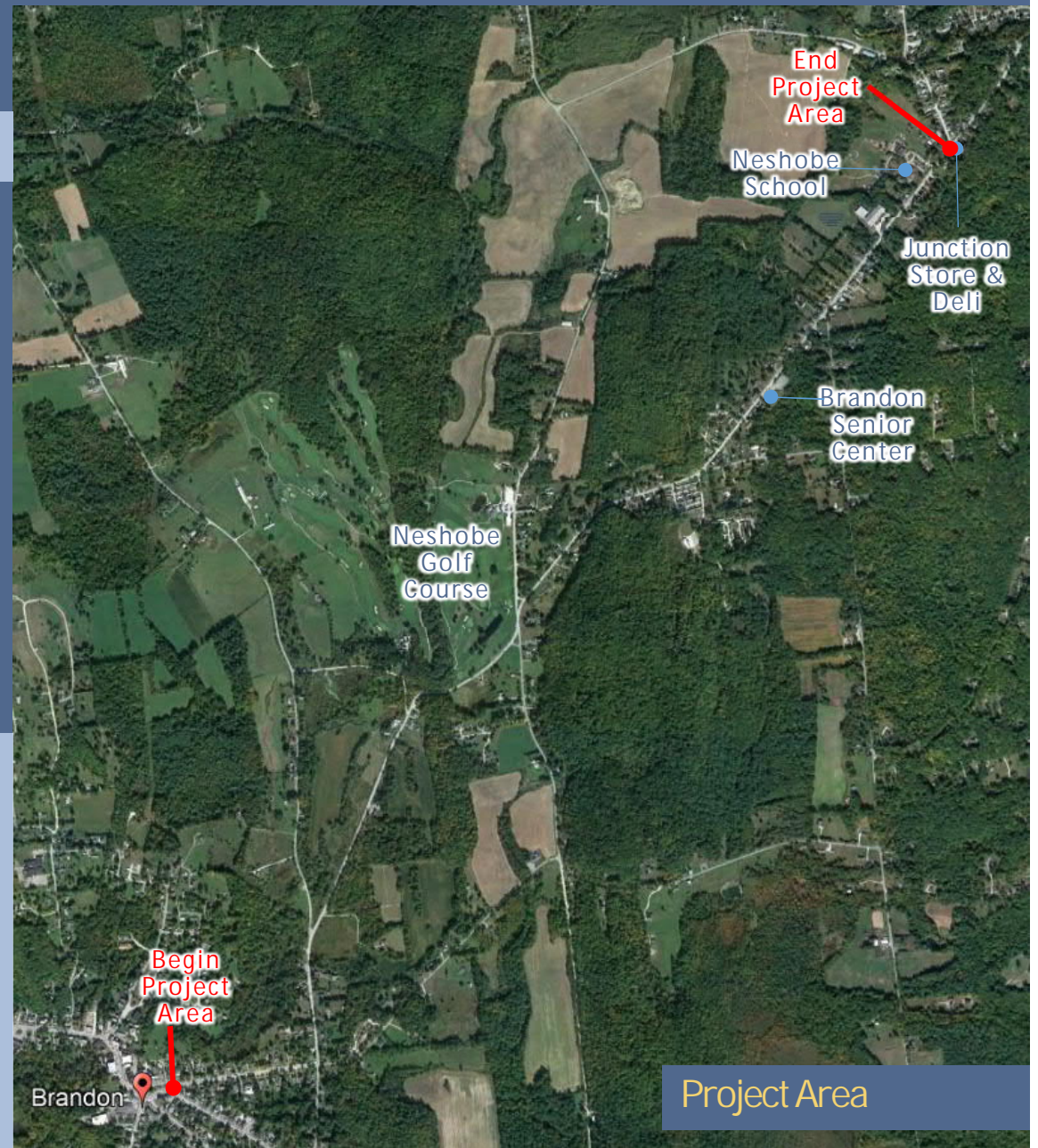


- Project Overview
- Scoping Study Process
- Project Area: Existing Conditions
- Overview of Next Steps
- Project Alternatives Discussion & Public Input

## Project Overview

Develop a Scoping Study Report that identifies ways to improve connectivity for bicyclists and pedestrians in Forest Dale.

Project funded through a VTrans Municipal Assistance Section TAP grant.



FOREST DALE SHARED USE PATH SCOPING STUDY  
LOCAL CONCERNS MEETING

- Project Overview

- Scoping Study Process

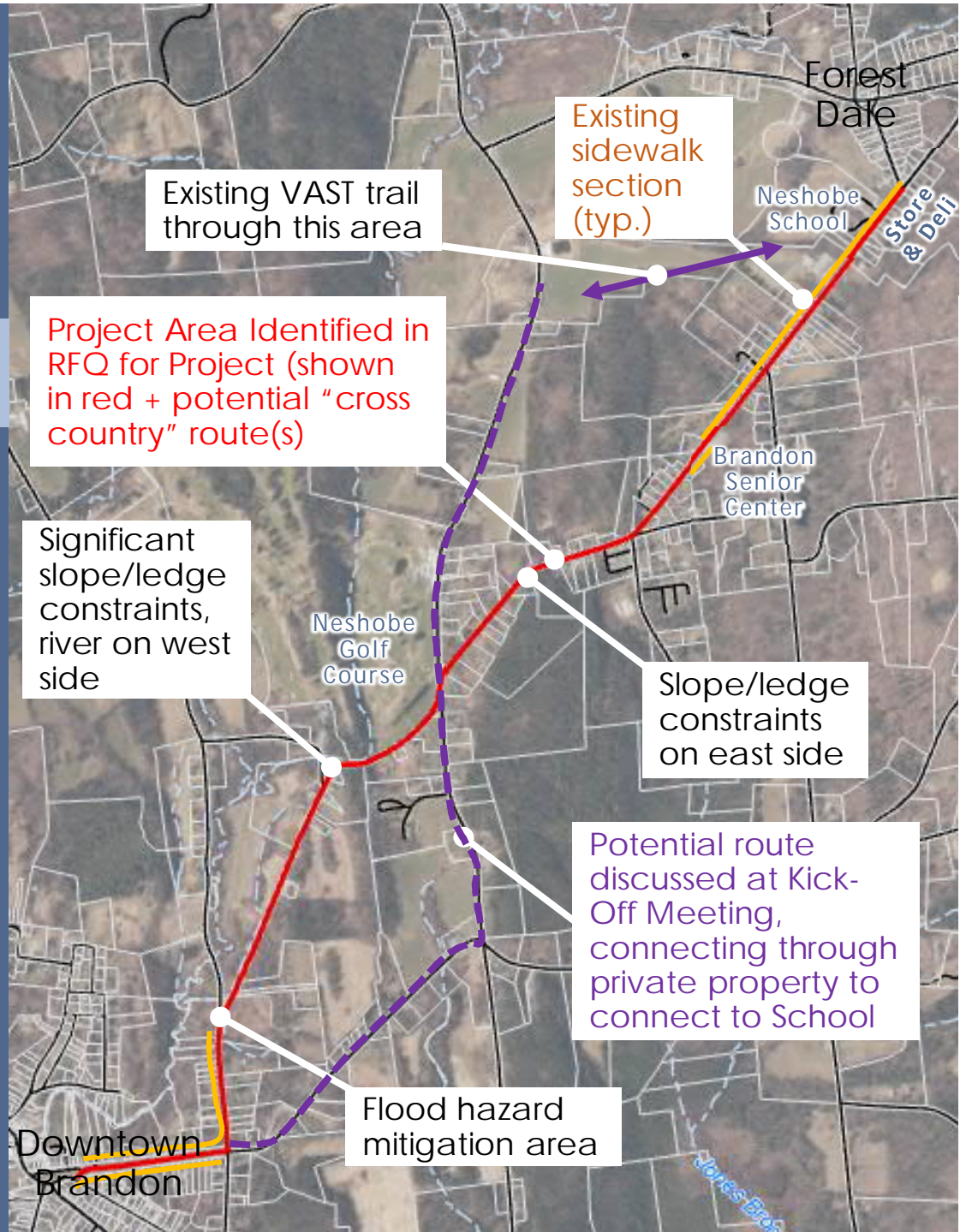
- Project Area: Existing Conditions
- Overview of Next Steps
- Project Alternatives Discussion & Public Input

- Project Kick-Off Meeting
- Compile Basemap / Document Existing Conditions
- Local Concerns Meeting ← We are here
- Purpose and Need Statement
- Development of alternatives
- Natural and Cultural Resource Reviews
- Alternatives Presentation Meeting
- Scoping Study Report
- Public Informational Meeting

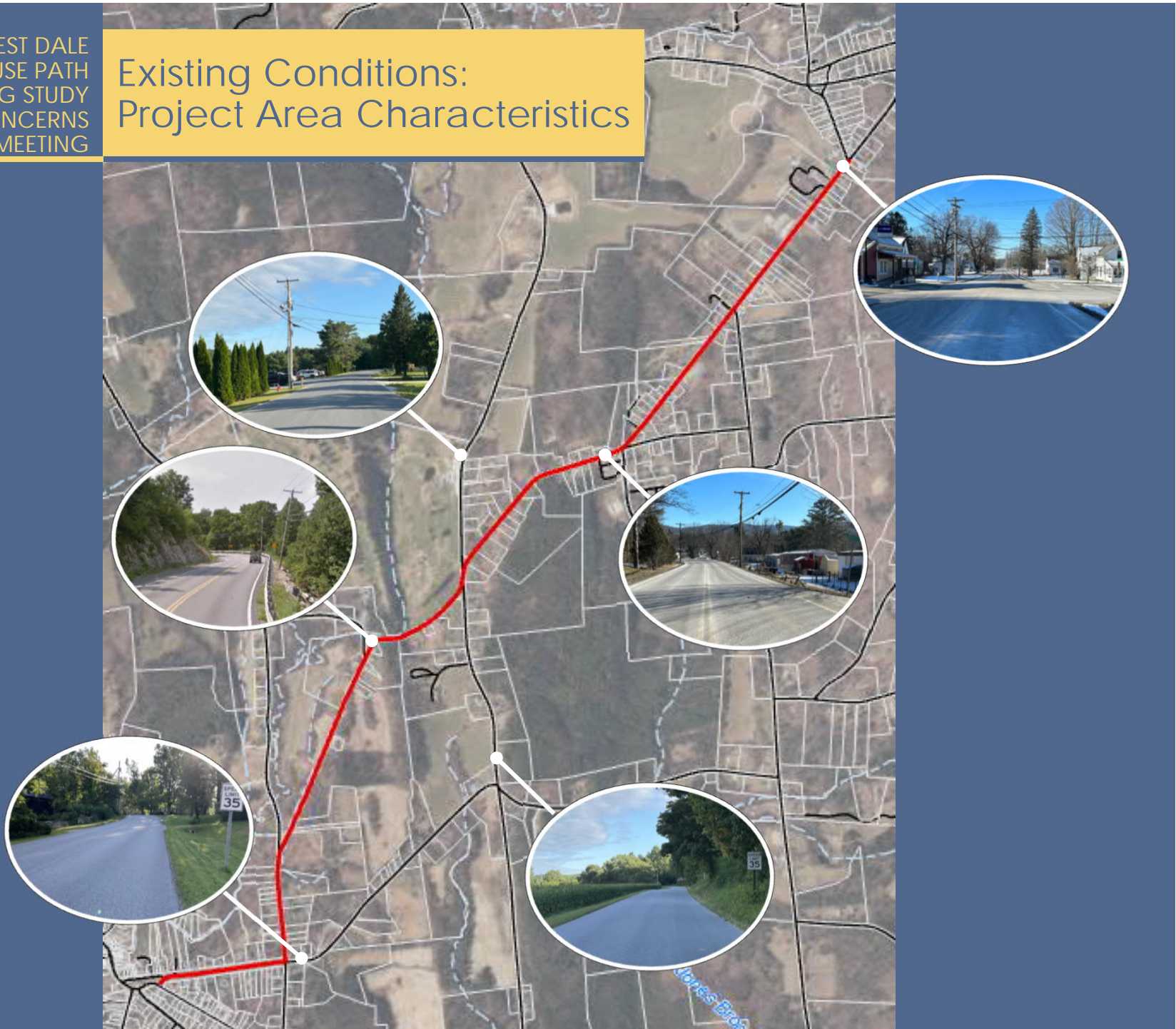


FOREST DALE SHARED USE PATH SCOPING STUDY  
LOCAL CONCERNS MEETING

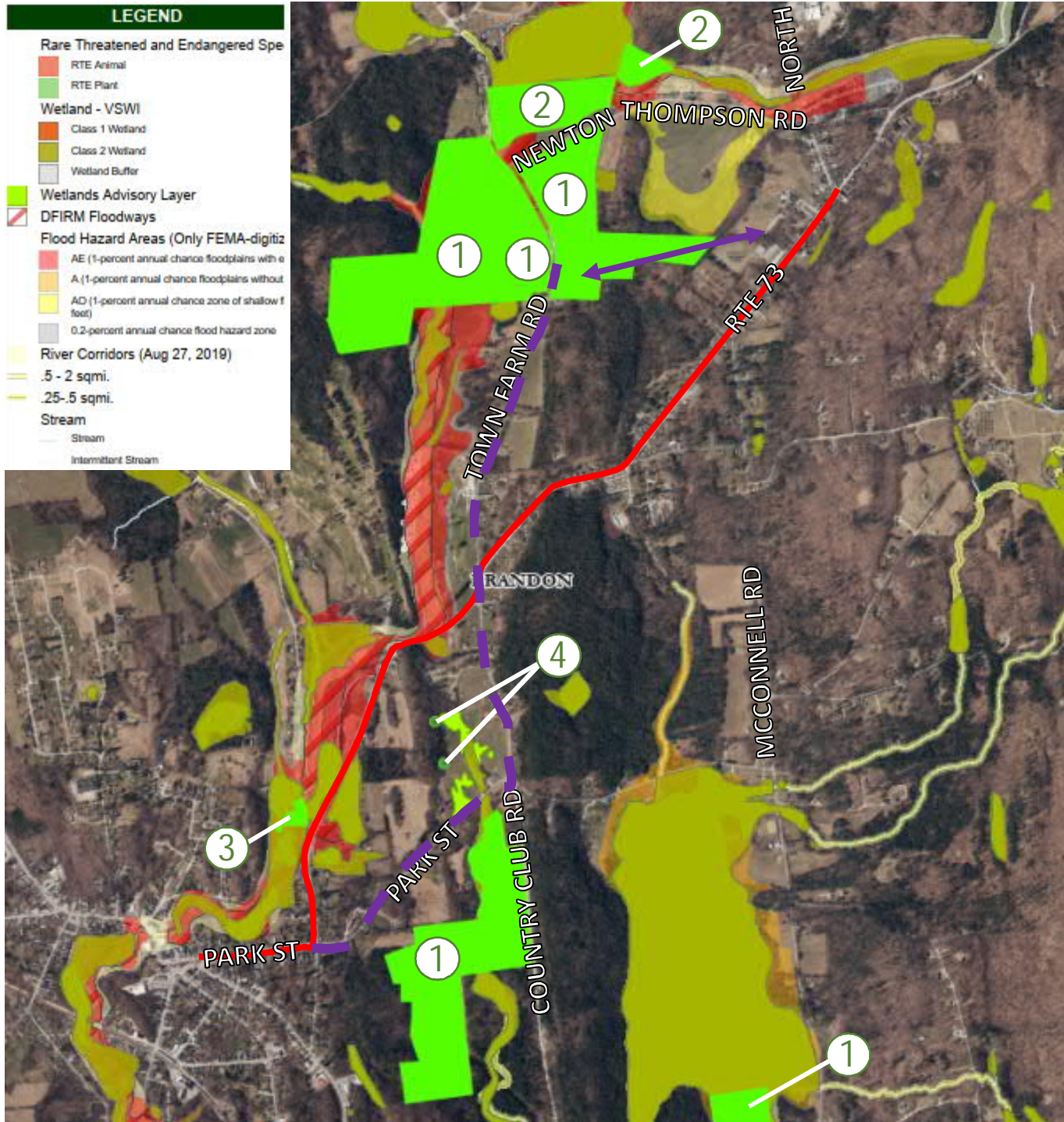
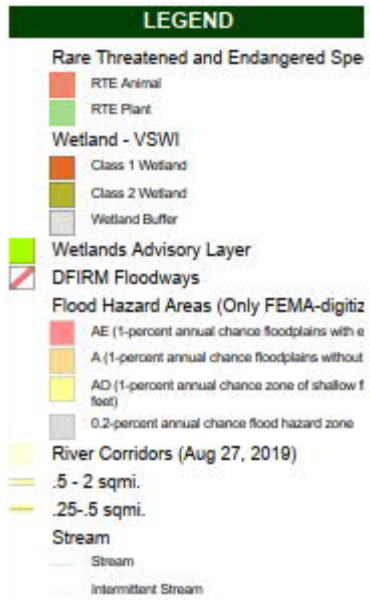
- Project Overview
- Scoping Study Process
- Project Area: Existing Conditions
- Overview of Next Steps
- Project Alternatives Discussion & Public Input



## Existing Conditions: Project Area Characteristics







## Existing Conditions: Environmental Resources (VT ANR Atlas)

### Natural Resource Management Areas

- ① VT Land Trust Easement (no known protection from conversion to unnatural land cover)
- ② VT River Conservancy Easement (permanent protection from conversion, no interference)
- ③ Brandon FEMA (permanent protection from conversion, no interference)

### Rare/Threatened Endangered Species

- ④ Plant

FOREST DALE SHARED USE PATH SCOPING STUDY  
LOCAL CONCERNS MEETING

- Project Overview
- Scoping Study Process
- Project Area: Existing Conditions
- Overview of Next Steps
- Project Alternatives Discussion & Public Input

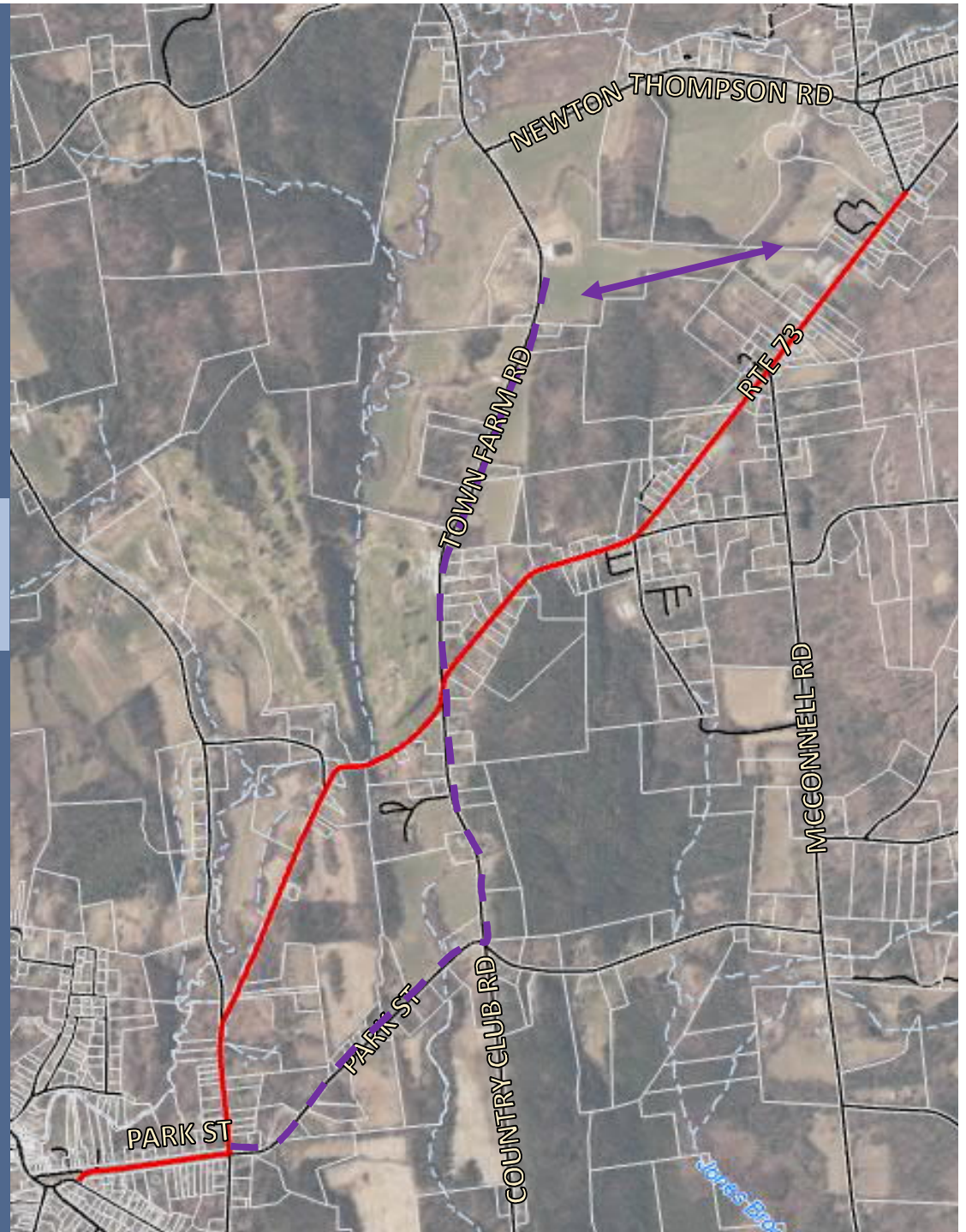


- Purpose & Need Statement
- Finalize Existing Conditions Review and develop conceptual alternatives
- Natural & cultural resource reviews
- Tweak alternatives as needed pending environmental / cultural resource reviews
- Alternatives Evaluation
- Alternatives Presentation Meeting
- Draft Scoping Study Report
- Public Informational Meeting
- Scoping Study Report



FOREST DALE SHARED USE PATH SCOPING STUDY  
LOCAL CONCERNS MEETING

- Project Overview
- Scoping Study Process
- Project Area: Existing Conditions
- Overview of Next Steps
- Project Alternatives Discussion & Public Input

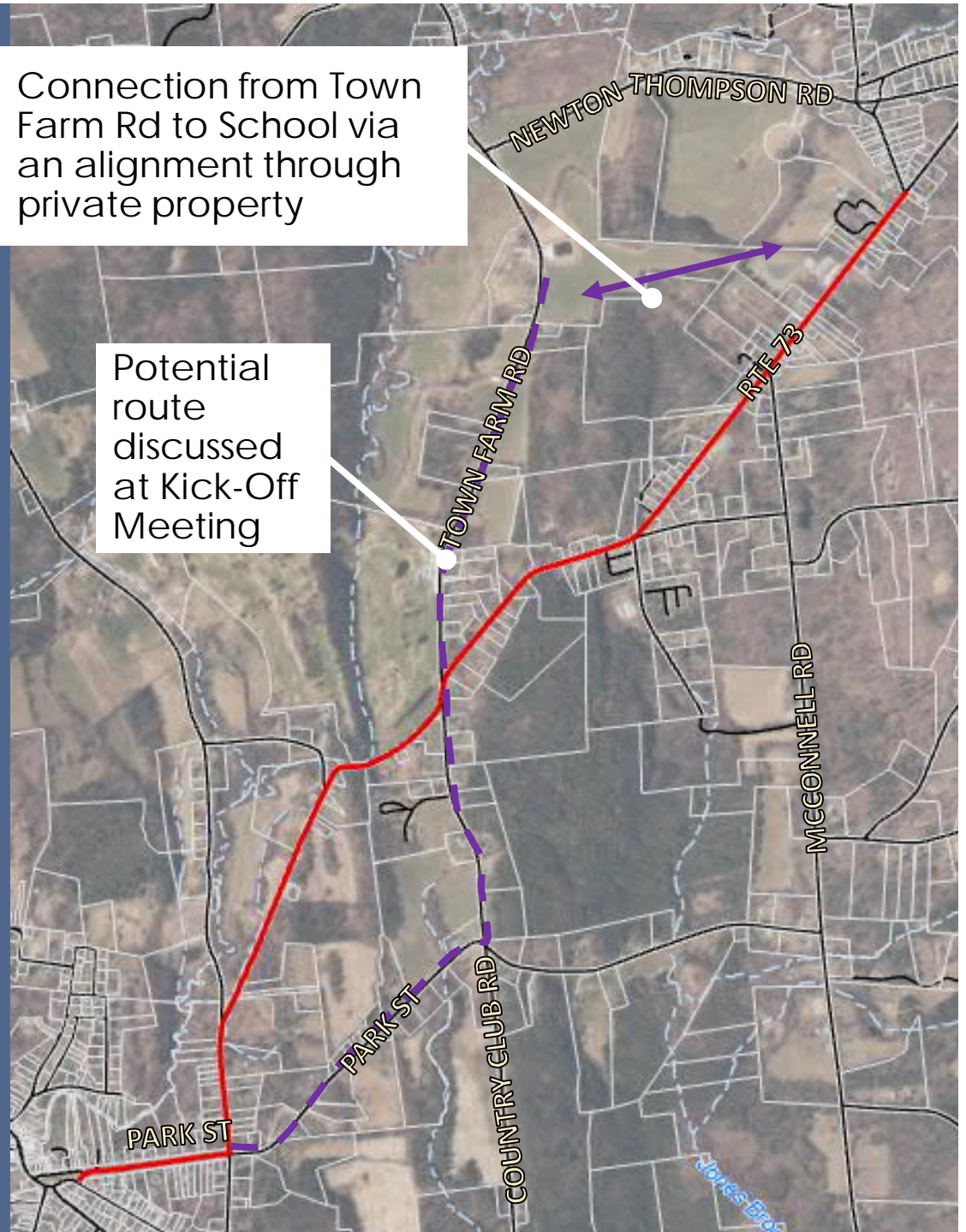


## Project Alternatives Discussion & Public Input

- Side of road preferences
- Bike/Ped facility type
  - curbed sidewalk
  - sidewalk with green strip
  - bike lane
  - multi-use path
- Surface material
- Input on order of priority for proposed improvements
- What is your vision for bike/ped improvements in this area?

Connection from Town Farm Rd to School via an alignment through private property

Potential route discussed at Kick-Off Meeting





# FOREST DALE SHARED USE PATH SCOPING STUDY LOCAL CONCERNS MEETING September 4, 2024

